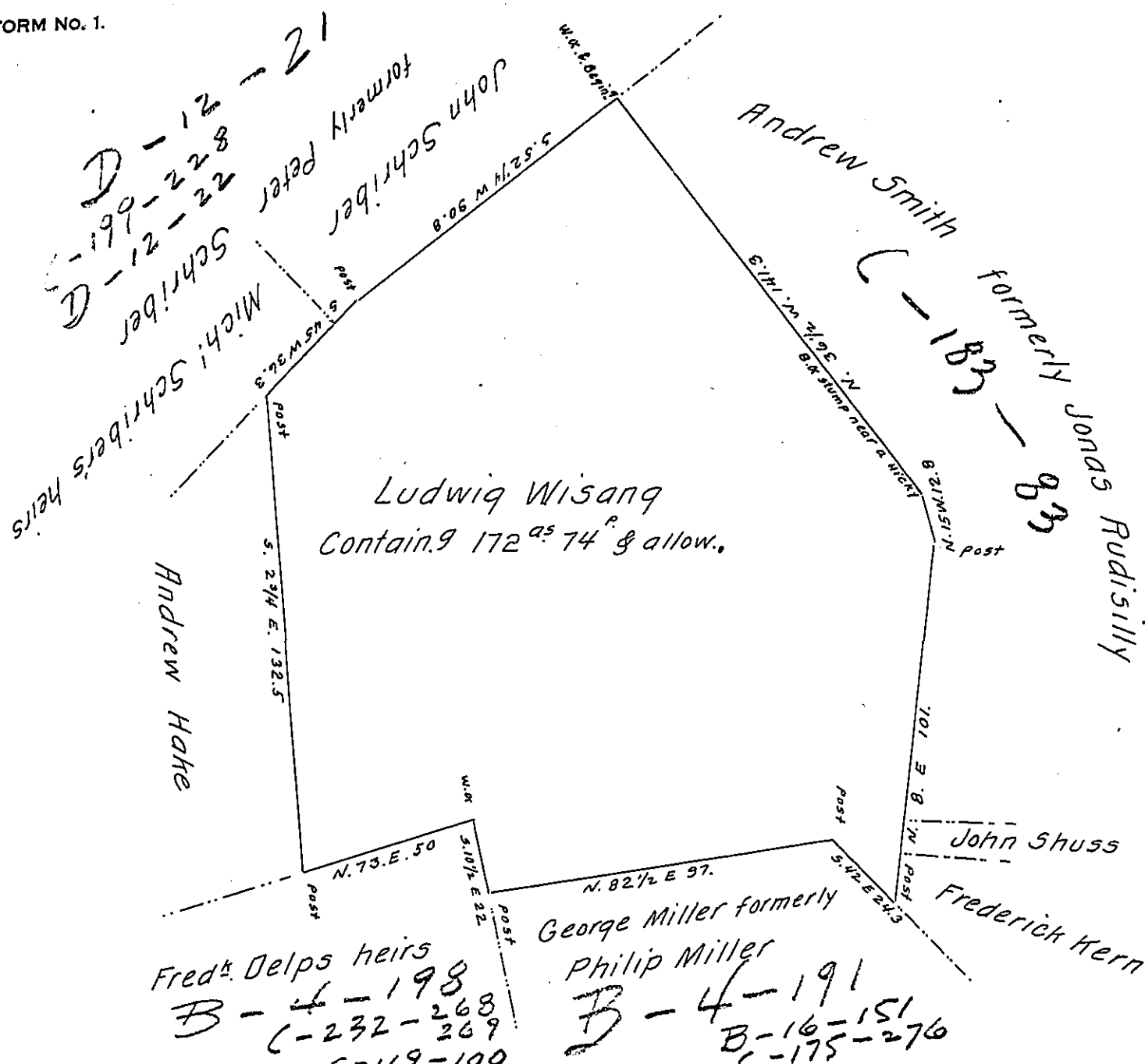


FORM NO. 1.



Situate in Manchester township in the County of York. Containing as above Set forth 172^{as} 74 perches and allowance &c^a Originally Surveyed by Charles Lukens late D. S. In pursuance of a Warrant for 150^{as} granted to Ludwig Wisang bearing date the 19th day of August A. D. 1766. and now this 2^d day of June 1828 the same is Calculated, examined found Correct and at the request of the present owner John Lour returned for Confirmation.

To Gabriel Hiester Esq^r }
 Surveyor General

Dan^l Small D. S.

IN TESTIMONY that the above is a copy of the original remaining on file in the Department of Internal Affairs of Pennsylvania, made conformably to an Act of Assembly approved the 16th day of February 1833, I have hereunto set my hand and caused the Seal of said Department to be affixed at Harrisburg, this fifth day of June 1907.

Henry Houck
 Secretary of Internal Affairs.